

Premier Exhibition

**For Immediate
Release:
October 15, 2009**

**Patti Mollica
Eric David Laxman
Eleanor Grace Miller**

**October 29 – December 13, 2009
Reception: Thurs., Oct. 29, 6-9 PM**

Skylight Gallery is pleased to present, for its maiden voyage, an exhibition of the works of three extremely accomplished and talented contemporary artists.

Cabs race to beat traffic signals, hot dog vendors ply their trade beneath sun-bleached umbrellas, subway passengers are frozen in thought between Brooklyn and Manhattan. Artist Patti Mollica's collection of NYC paintings indulges in a vibrant coloristic playfulness while seamlessly capturing an authentic sense of the city's character and atmosphere. Rather than distort reality, her city depictions seem to amplify it, making us see even the most mundane, familiar places and things with greater clarity.

Patti is represented by The Chase Gallery in Richmond, VA, the Ruggerio Gallery in Stamford, CT and Simie Maryles Gallery in Provincetown, MA. Her paintings are in numerous private and public collections. She teaches painting at Rockland Center for the Arts, Rye Arts Center and conducts painting workshops locally.

In his free standing and wall sculptures, Eric David Laxman combines carved stone fragments, welded metal and found objects into intricate abstract and figurative compositions. He is interested in the nature of the materials themselves and the relationships of the different materials to each other. Laxman wants his laborious constructions to have a sense of organic spontaneity. His work is a metaphor for the way he attempts to fuse diverse, competing elements to create a life that is a balanced, integrated whole.

Laxman has exhibited his diverse works throughout the Metropolitan area and nationwide. His most recent commissions include Hamilton City of Sculpture in Ohio, Greenwich Hospital in Connecticut and the Summit Medical Group in New Jersey. Laxman is an award winning artist who has been featured in many publications including "The New York Times," the "Journal News Home Design Magazine," "The Artful Home," "Hudson Valley Magazine" and "Metrohouse."

Eleanor Grace Miller's still life paintings concentrate on the compositional arrangement of objects, many of which she creates herself, often viewed and presented from above. Her recent work incorporates a flattened black, along with a limited use of saturated color into a fully representational image. Miller's work is influenced by strong design elements she finds in early Aboriginal, African, and Mid-Eastern cultures.

The recipient of numerous awards, among them, "Best in Show" from the Museum of Fine Arts in Springfield, MA, and the "Anna Hyatt Huntington Medal" from the National Arts Club in NY, Eleanor Grace Miller has exhibited extensively throughout the Metropolitan Area and nationally, and her paintings are in public, foundation and private collections.

Premier Exhibition

10/29 – 12/13/09 • Reception 10/29 6PM

Patti Mollica



Park
18x24
Acrylic/Canvas



Rooftops
32x32
Acrylic/Canvas



Crossing Madison
36x36
Acrylic/Canvas

Eric David Laxman



"Vertebrae"
Steel, Found Objects
36"H X 10"W X 6"D



"Plow" – Detail
Steel, Stone & Found Objects
72"H X 24"W X 36"D



"Geology"
Welded, Flame Cut Steel
24"H X 6"W X 3"D

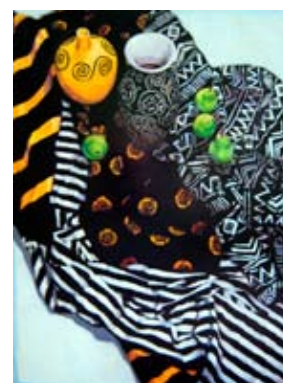
Eleanor Grace Miller



"721-722"
oil/24k gold/canvas
48"x72"



"709"
oil/panel
48"x36"



"696"
oil/panel
48"x36"